

Алматы (7273)495-231
Ангарск (3955)60-70-56
Архангельск (8182)63-90-72
Астрахань (8512)99-46-04
Барнаул (3852)73-04-60
Белгород (4722)40-23-64
Благовещенск (4162)22-76-07
Брянск (4832)59-03-52
Владивосток (423)249-28-31
Владикавказ (8672)28-90-48
Владимир (4922)49-43-18
Волгоград (844)278-03-48
Вологда (8172)26-41-59
Воронеж (473)204-51-73
Екатеринбург (343)384-55-89

Иваново (4932)77-34-06
Ижевск (3412)26-03-58
Иркутск (395)279-98-46
Казань (843)206-01-48
Калининград (4012)72-03-81
Калуга (4842)92-23-67
Кемерово (3842)65-04-62
Киров (8332)68-02-04
Коломна (4966)23-41-49
Кострома (4942)77-07-48
Краснодар (861)203-40-90
Красноярск (391)204-63-61
Курск (4712)77-13-04
Курган (3522)50-90-47
Липецк (4742)52-20-81

Магнитогорск (3519)55-03-13
Москва (495)268-04-70
Мурманск (8152)59-64-93
Набережные Челны (8552)20-53-41
Нижний Новгород (831)429-08-12
Новокузнецк (3843)20-46-81
Ноябрьск (3496)41-32-12
Новосибирск (383)227-86-73
Омск (3812)21-46-40
Орел (4862)44-53-42
Оренбург (3532)37-68-04
Пенза (8412)22-31-16
Петрозаводск (8142)55-98-37
Псков (8112)59-10-37

Пермь (342)205-81-47
Ростов-на-Дону (863)308-18-15
Рязань (4912)46-61-64
Самара (846)206-03-16
Саранск (8342)22-96-24
Санкт-Петербург (812)309-46-40
Саратов (845)249-38-78
Севастополь (8692)22-31-93
Симферополь (3652)67-13-56
Смоленск (4812)29-41-54
Сочи (862)225-72-31
Ставрополь (8652)20-65-13
Сургут (3462)77-98-35
Сыктывкар (8212)25-95-17
Тамбов (4752)50-40-97

Тверь (4822)63-31-35
Тольятти (8482)63-91-07
Томск (3822)98-41-53
Тула (4872)33-79-87
Тюмень (3452)66-21-18
Ульяновск (8422)24-23-59
Улан-Удэ (3012)59-97-51
Уфа (347)229-48-12
Хабаровск (4212)92-98-04
Чебоксары (8352)28-53-07
Челябинск (351)202-03-61
Череповец (8202)49-02-64
Чита (3022)38-34-83
Якутск (4112)23-90-97
Ярославль (4852)69-52-93

Россия +7(495)268-04-70

Казахстан +7(7172)727-132

Киргизия +996(312)96-26-47

www.hpafair.nt-rt.ru | | hip@nt-rt.ru

Технические характеристики на тормозные стенды СОМРАСТ-PRO-LBT4-6, СОМРАСТ PRO PBT, СОМРАСТ PRO МОТО КОМПАНИИ **HPA-fair**

Виды товаров: роликовые тормозные стенды для мотоциклов, пластинчатые тормозные тестеры для быстрой проверки эффективности торможения легких коммерческих автомобилей и фургонов массой до 3,5 т, 2-3-4-колесных транспортных средств и квадроциклов, 4-х пластинчатые тормозные стенды для легковых автомобилей.

TEST AND GARAGE EQUIPMENT



HPA
faip



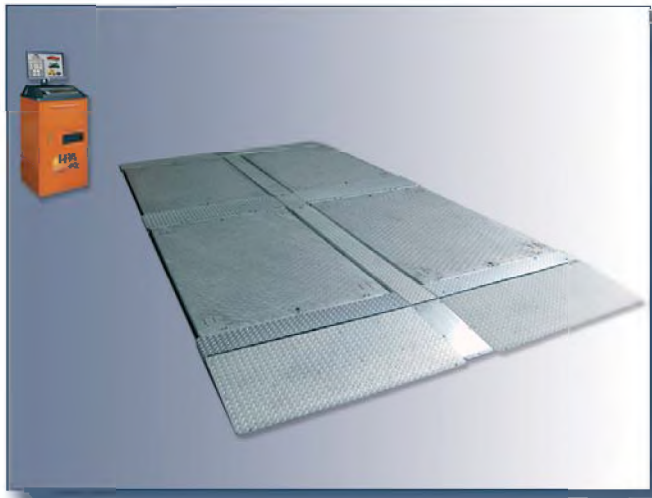
Banco prova freni a piastre per veicoli leggeri e 2, 3, 4 ruote

Plate brake tester for light vehicles and 2, 3, 4 wheels.

COMPACT PRO
PBT

COMPACT PRO PBT

Banco prova freni a piastre per veicoli leggeri e 2, 3, 4 ruote.
Plate brake tester for light vehicles and 2, 3, 4 wheels.



IT Caratteristiche funzionali

- Banco prova freni a 4 piastre** per la rapida verifica dell'efficienza frenante su veicoli leggeri (auto e furgoni aventi massa massima fino a 3,5 t.), 2, 3, 4 ruote e quads.
- Grande facilità di installazione grazie alla semplice e funzionale struttura meccanica.
- Accessori appositi e specifiche licenze software consentono di verificare, in modo modulare, le diverse tipologie di veicoli.
- Telecomando radio per la gestione completa di tutta la procedura di prova e la trasmissione al programma operativo degli sforzi applicati al pedale oppure alla leva (motocicli e/o tricicli e quadricicli).
- Installazione in modalità stand-alone o nel contesto di una linea di revisione MCTC Nef 2 compatibile.

EN Functional features

- 4 Plate brake tester** designed for a quick check of braking efficiency on light vehicles (cars and vans up to overall 3.5 t. maximum), 2, 3, 4 wheel vehicles and quads.
- Easy installation thanks to the simple and functional mechanical structure.
- Special accessories and specific software licenses are used to verify, so modular, different types of vehicles.
- Radio remote control for the complete management of the entire test procedure and the transmission to the operational programme of efforts applied to the pedal or lever (motorcycles and/or tricycles and quadricycles).
- Available in stand-alone mode installation or within the context of a multifunction inspection line.

Dati tecnici

Technical data

Cabinato strumentazione:	Instrument cabinet:
<input type="checkbox"/> Sforzo frenante massimo visualizzato	Max. braking force displayed 600 daN
<input type="checkbox"/> Precisione	Precision ±1%
<input type="checkbox"/> Risoluzione sforzi frenanti	Braking force resolution ±10 N ÷ ±50 N
<input type="checkbox"/> Alimentazione standard	Standard power supply 230 V - 1 Ph - 50 Hz
<input type="checkbox"/> Potenza assorbita	Absorbed power 500 W
Piastre:	Plates:
<input type="checkbox"/> Carico ammissibile per ruota	Maximum capacity per wheel 12.500 N
<input type="checkbox"/> Carico ammissibile per asse	Maximum capacity per axle 25.000 N
<input type="checkbox"/> Coefficiente di aderenza piastre	Plate grip coefficient ≥ 0.6
<input type="checkbox"/> Massima forza di frenatura misurabile	Maximum braking force measurable 10.000 N
<input type="checkbox"/> Massima peso per ruota misurabile	Maximum weight force measurable 10.000 N
<input type="checkbox"/> Trattamento superficiale piastre	Plate covering Zincatura/ Galvanization
<input type="checkbox"/> Carreggiata (min. ÷ max.)	Track (min. ÷ max.) 200 ÷ 2400 mm
<input type="checkbox"/> Dimensioni singola piastra (Lungh. x Largh.)	Single plate dimensions (Length x Width) 1.800 x 1.000 mm
<input type="checkbox"/> Altezza piastra dal suolo	Plate height from the ground 75 mm
<input type="checkbox"/> Dimensioni max. banco (Lungh. x Largh.)	Max. bench dimensions (Length x Width) 2.470 x 4.200 mm
	(senza rampe/without ramps)

✓ MCTC Net2



HPA
faip



Linee di controllo multifunzioni per
motocicli e ciclomotori

Multifunction inspection lines
for motorcycles and motorbikes

LINEE DI REVISIONE
VEHICLE INSPECTION LINES



COMPACT PRO MOTO

Caratteristiche generali

Il **cabinato COMPACT PRO** è la base "intelligente" per la realizzazione di linee di controllo multifunzioni, normalmente operanti nei Centri della Motorizzazione Civile per la revisione dei veicoli.

Monitor a colori 19" o 17" LCD (A richiesta). Tastiera alfanumerica per la preselezione delle prove, dei programmi, dei dati del veicolo e dei parametri.

Stampante a colori A4 (A richiesta), personalizzabile, può stampare i dati di controllo ed i grafici caratteristici elaborati.

Software in ambiente Windows: l'accuratezza della grafica consente una notevole leggibilità anche a grande distanza.

Blocco prova freni a rulli per moto:

a corpo unico, potenza 2,2 kW, tensione 400 V / 3 Ph / 50 Hz.

Rivestimento rulli in polvere epossidica.

Celle di misura di tipo estensimetrico di grande precisione, affidabilità e di notevole resistenza ai sovraccarichi.

Pesa integrata.

Telecomando via radio con trasmettitore segnali dinamometri, **coppia dinamometri** e **pulsante a fungo di emergenza** di serie.

Main features

COMPACT PRO cabinet is the main unit for multifunction inspection lines for vehicles operating in MOT-centres.

19" or 17" LCD colour monitor (Optional). The alphanumeric keyboard for the selection of the test procedures, vehicle data input and parameters.

Colour A4 printer (Optional) for a comprehensive printout of test results and relevant graphics.

Software based on Windows O/S: the accuracy of the graphics permits a perfect legibility even far away from the vehicle.

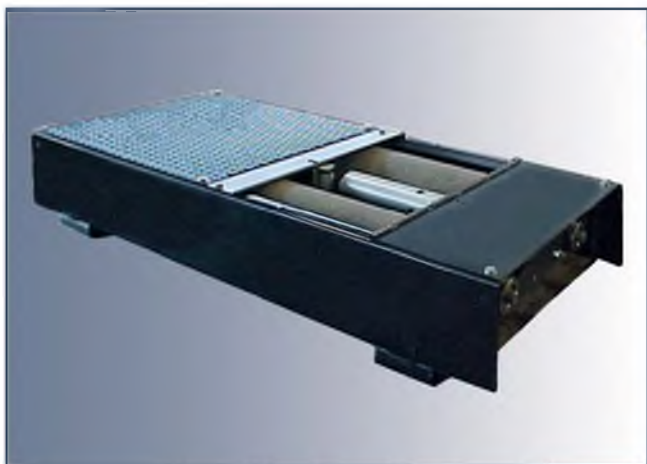
Brake tester roller unit for motorcycles:

single roller bed set, power ratings (2,2 kW, 400 V / 3 Ph / 50 Hz). Special plastic cement-coating gritted rollers.

High precision extensimetric measurement cells, long lasting, reliable and highly resisting to overload.

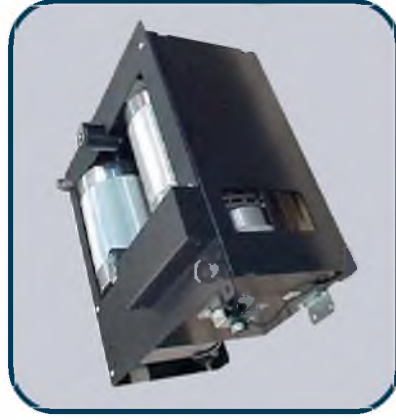
Built-in weighing unit.

Radio remote control with dynamometer signal transmitter, **integrated force transducer** (dynamometer) and **emergency push-button** supplied as standard.

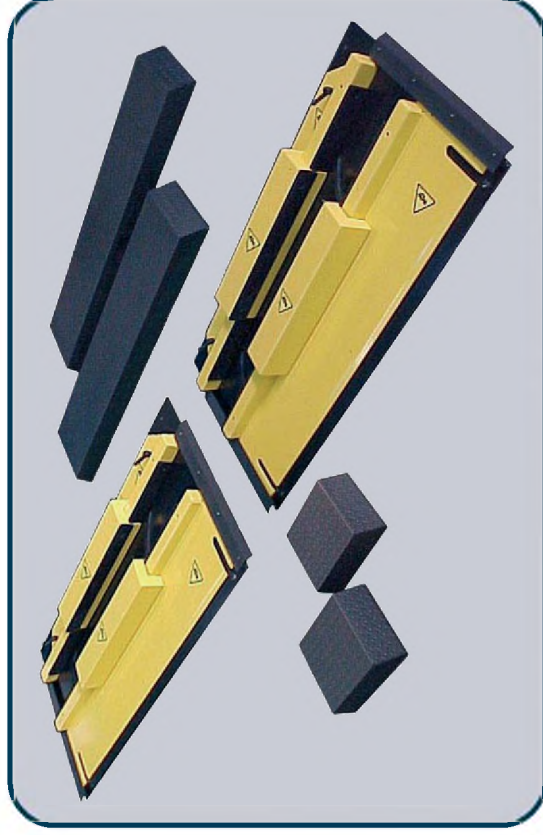


Una tecnica di controllo evoluta adeguata alle normative internazionali.
A highly developed control technique conforming to the international regulation.

LINEE DI REVISIONE
INSPECTION LINES



Banco 'PROVA VELOCITA' max. per
motocicli e ciclomotori a due ruote.
Dynamometer roller bench for testing max.
speed of two wheels vehicles.



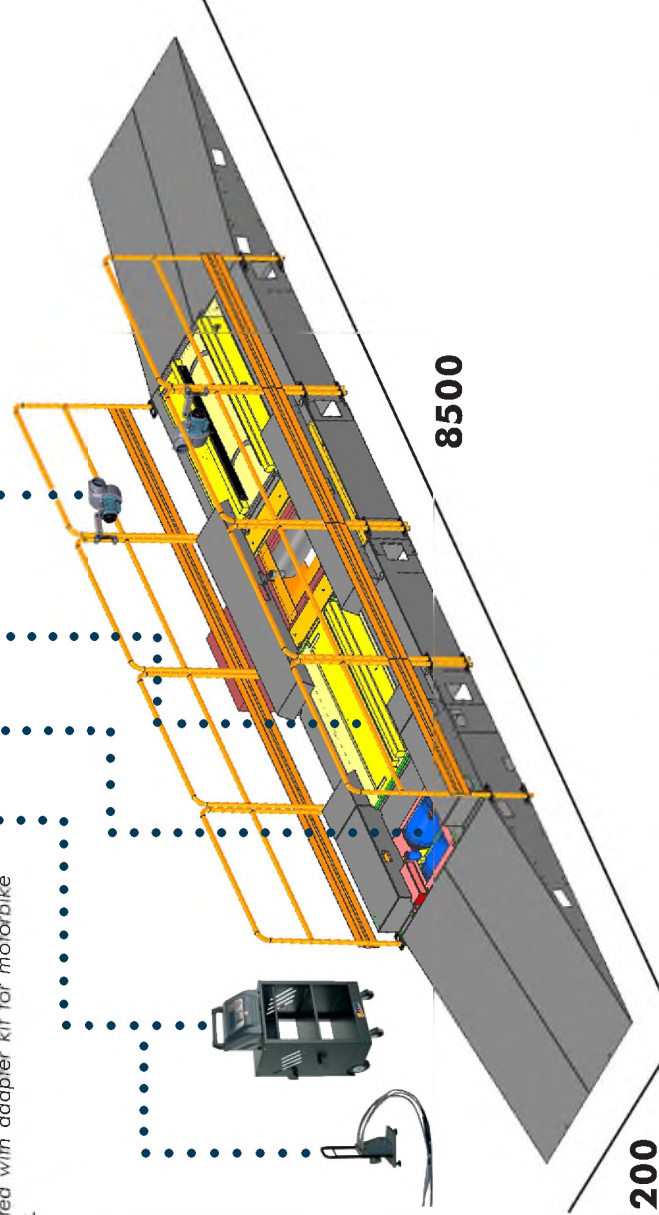
Coppia morse pneumatiche asimmetriche ribassate da incasso.
Pair of low pneumatic asymmetric clamps for flush installation.



810
Analizzatore gas indipendente con display
LCD, tastiera e stampante. Da completare
con il kit adeguamento gas per moto.
Exhaust gas analyser. Independent unit with
LCD display, printer and keyboard. To be
completed with adapter kit for motorbike
exhaust.



Coppia ventole di raffreddamento motore,
contrapposte, montate fisse su ringhiere podio.
Pair of engine cooling fans. Podium installation.



1200

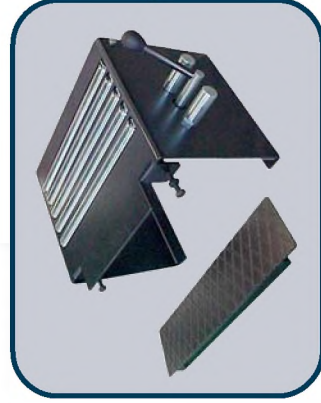
8500

LINEA COMPLETA SU PODIO PROVA FRENI E PROVA VELOCITA' PER PROVE SU VEICOLI A 2 RUOTE
PODIUM INSTALLATION COMPLETE BRAKE AND SPEED TESTING LINE FOR VEHICLES WITH 2 WHEELS

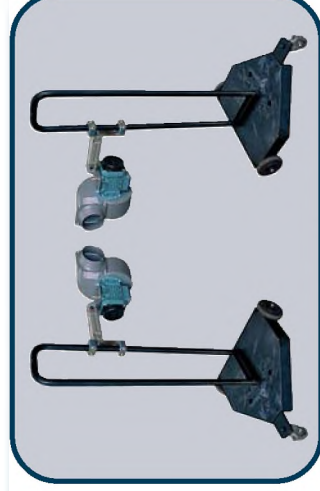
L'alta tecnologia italiana per i veicoli di tutto il mondo.
Italian high tech for vehicles all over the world.

**LINEE DI REVISIONE
INSPECTION LINES**

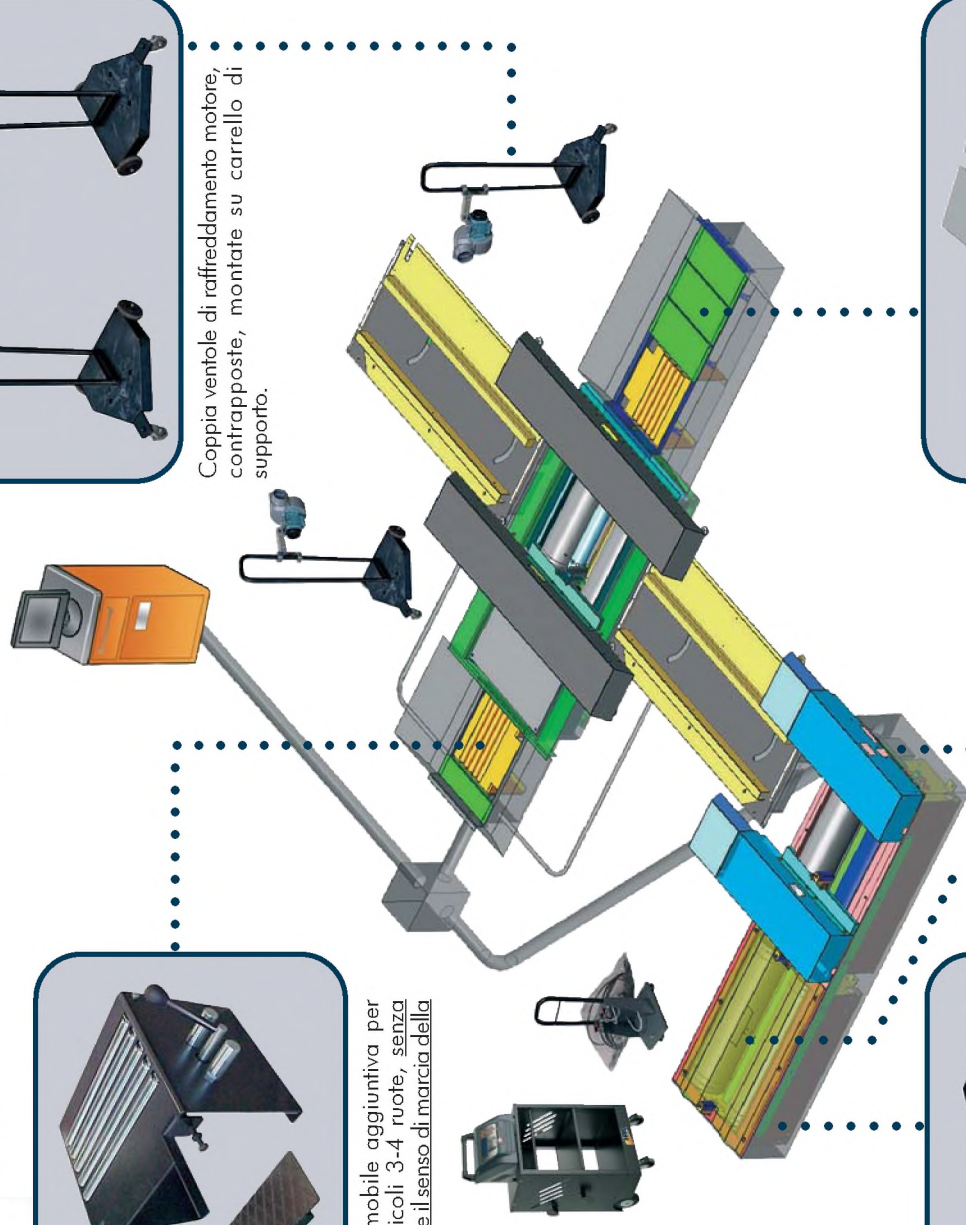
**LINEA COMPLETA AD INCASSO PROVA FRENI E
PROVA VELOCITA' PER PROVE SU VEICOLI A 2-3-4 RUOTE
FLUSH INSTALLATION COMPLETE BRAKE AND SPEED
TESTING LINE FOR VEHICLES WITH 2-3-4 WHEELS**



Kit rulliera mobile aggiuntiva per prove su veicoli 3-4 ruote, senza dover invertire il senso di marcia della prova.



Coppia ventole di raffreddamento motore, contrapposte, montate su carrello di supporto.



Banco a rulli PROVA VELOCITA' PV-06 "Slave".



Kit 3 lamiere di tamponamento e telaio incasso laterale della rulliera mobile per prova su veicoli 3-4 ruote e "Quad".



Coppia di coperture supplementari per rulli PROVA VELOCITA' PV-06.



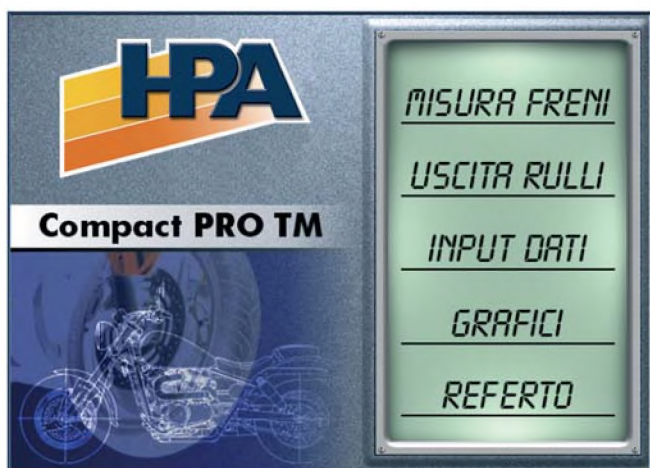
Banco a rulli PROVA VELOCITA' PV-06 "Master".

APPARECCHIATURE OMOLOGATE DAL MINISTERO DEI TRASPORTI

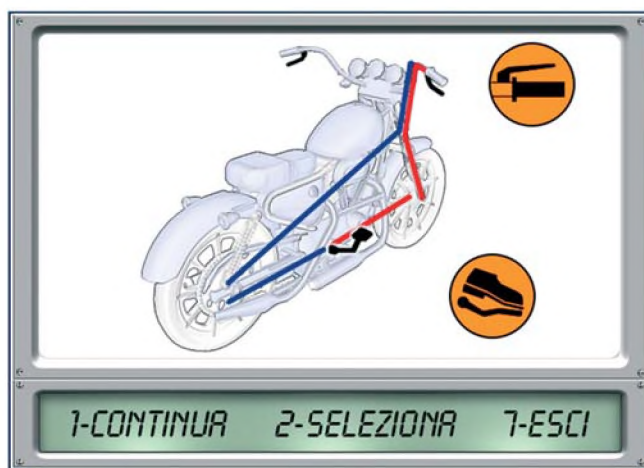
OM

E' l'esperienza che fa la differenza.
It's experience that makes the difference.

LINEE DI REVISIONE
INSPECTION LINES



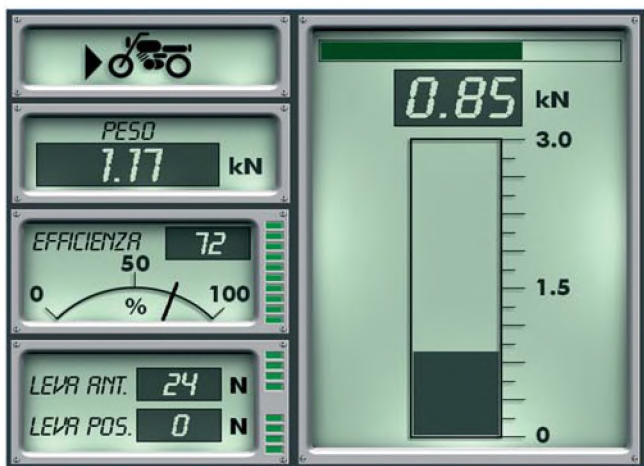
Programma PROVA FRENI. Gestione integrata tramite unico PC delle prove relative a: freni, analisi gas moto, massima velocità.
BRAKE TESTING program. Integrated handling by means of a single PC of the following tests: brakes, bike gas analysis, max speed.



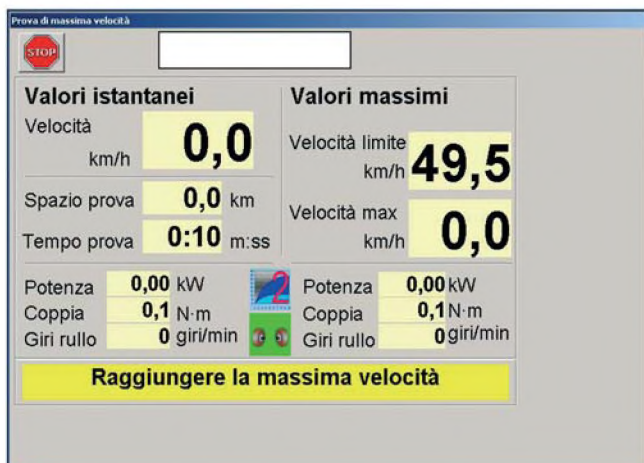
Programma PROVA FRENI. Selezione tipo impianto frenate.
BRAKE TESTING program. Braking system type selection.



Trasduttore di forza (dinamometro) applicato sulla leva di comando del freno anteriore.
Force transducer (dynamometer) applied on front brake handle.



EFFICIENZA FRENANTE. Esecuzione prova su freno anteriore.
BRAKE EFFICIENCY. Test execution on front brake.



Programma PROVA VELOCITA'. Misura della velocità massima di motocicli e ciclomotori e test gas motori a due e quattro tempi.



PROVA VELOCITA'. Dettaglio "Quad" su blocco rulli durante l'esecuzione della prova.



Dati tecnici

Technical data

Cabinato strumentazione:

- Storzo frenante massimo visualizzato
- Precisione
- Risoluzione sforzi frenanti
- Alimentazione standard
- Potenza assorbita

Instrument cabinet:

- Max. braking force displayed 300 daN
- Precision ±0,5%
- Braking force resolution 1daN
- Standard power supply 400 V - 3 Ph - 50 Hz
- Power absorption 500 W

Blocco rulli prova freni:

- Portata massima ammissibile
- Potenza motore
- Diametro rulli
- Lunghezza utile rulli
- Diametro max. ammissibile ruote in prova
- Velocità di prova (a vuoto)
- Alimentazione standard
- Livello di rumorosità in servizio

Brake roller unit:

- Maximum permissible capacity 500 daN
- Motor power 2,2 kW
- Roller diameter 204 mm
- Roller working length 375 mm
- Permissible diameter of wheels for testing 8" ÷ 24"
- Test speed (unladen) 5 km/h
- Standard power supply 400 V - 3 Ph - 50 Hz
- Noise level when running < 70 dB (A)

Banco rulli prova velocità:

- Alimentazione quadro elettrico
- Alimentazione aspiratore e ventilatori
- Carico ammissibile per asse
- Diametro rulli:
- Lunghezza utile rulli
- Distanza tra i centri dei rulli
- Velocità massima di prova
- Distanza interna rulli
- Distanza esterna rulli

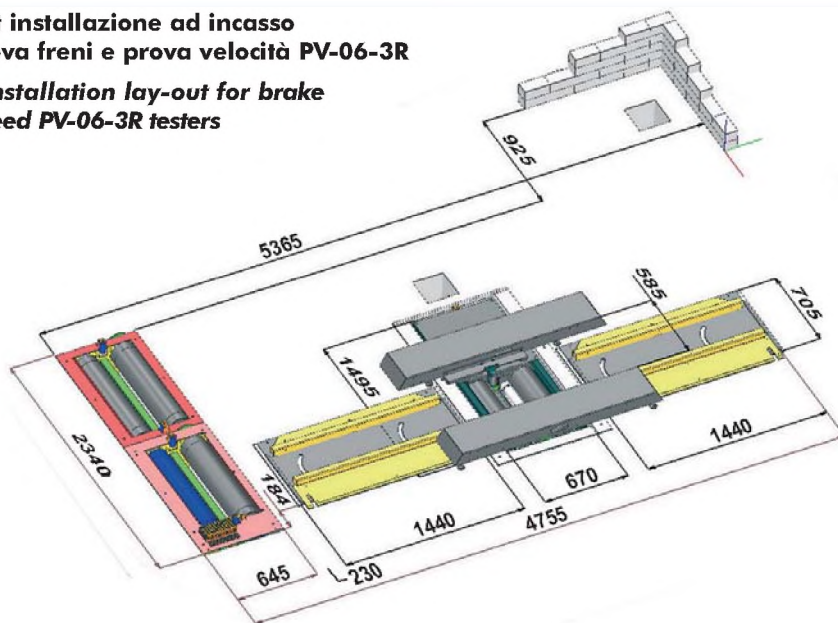
- 230Vac - 50/60Hz - 0,3 kW
- 400Vac - 50/60Hz - 3,7 kW
- 1000 daN
- 198 mm
- 400 mm
- 300 mm
- 80 km/h per 2 ruote, 70 km/h per tre e quattro ruote
- 200 mm
- 2000 mm

Dimensioni

Dimensions

**Lay-out installazione ad incasso
per prova freni e prova velocità PV-06-3R**

**Flush installation lay-out for brake
and speed PV-06-3R testers**



TEST AND GARAGE EQUIPMENT

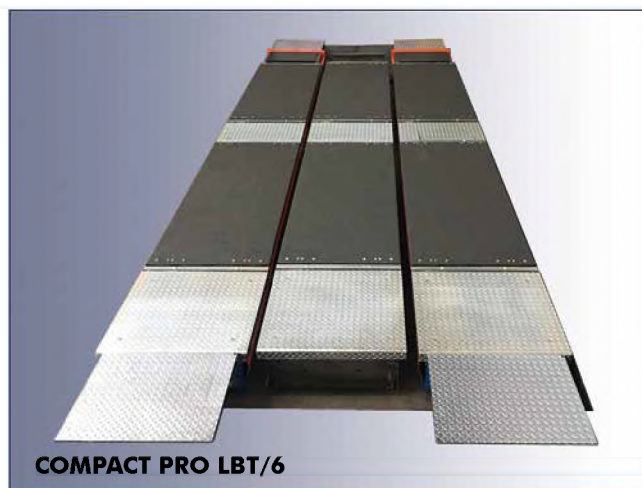
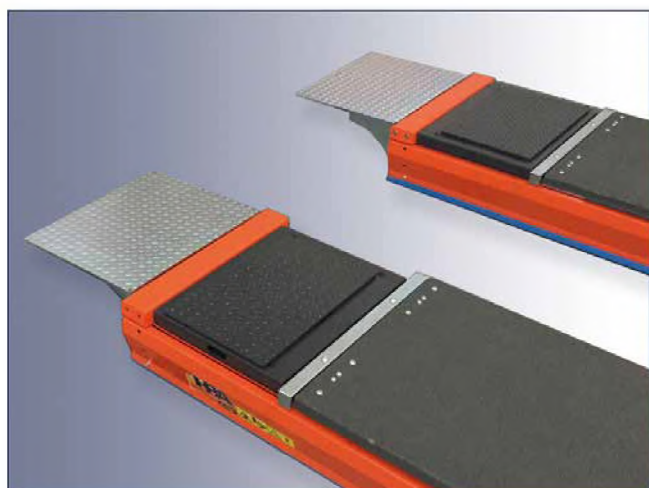


Plate brake tester for cars and 2-, 3- and 4-wheelers on lift

**COMPACT PRO
LBT/4**

COMPACT PRO LBT/4

Plate brake tester for cars and 2-, 3- and 4-wheelers on lift



COMPACT PRO LBT/6



Functional features

- Plate brake tester** to quickly check the braking efficiency of light commercial vehicles (cars and vans weighing max. 3.5 t), 2-/3-/4-wheelers and quads.
- The tester is made up of 4 plates (or 6 in the **LBT/6** version with two plates between the runways of the lift).
- The application on the **SUPERLIFT 50/X PG6 FAST-LBT** lift expands even more the concept of Universal, integrating the following in a single product:
 - Brake tester
 - 6-movement play detector
 - Lift for visual inspections.
- Very easy to install thanks to the simple and functional mechanical structure.
- Dedicated accessories and specific software licences allow inspecting the different types of vehicles in a modular way.
- Radio remote control for the complete management of the whole testing procedure and the transmission of the forces applied to the pedal or lever (motorcycles and/or three-/four-wheelers) to the operating program.
- Stand-alone installation or integration in a compatible MCTC Net 2 test line.

Technical data

Plates:	
<input type="checkbox"/> Plate surface treatment	Innovative corundum coating
<input type="checkbox"/> Permitted load per wheel	7 500 N
<input type="checkbox"/> Permitted load per axle	29.000 N
<input type="checkbox"/> Plate grip coefficient	μ: 0.6
<input type="checkbox"/> Plate minimum internal distance:	800 mm
<input type="checkbox"/> Plate maximum external distance:	2.400 mm
<input type="checkbox"/> Overall dimensions	5.100x2.260x290 mm

Accessories

Mandatory	
<input type="checkbox"/> LCT remote control	
<input type="checkbox"/> Car Cell and Motorbike Cell	
<input type="checkbox"/> Calibration kit - EPBT calibration kit	
<input type="checkbox"/> LBT car kit - LBT 3-/4-wheeler kit - LBT motorcycle kit	
Optional	
<input type="checkbox"/> Equipment PC - Monitor 19" - Monitor Support - Printer - Printer Support - LCT Cabinet - LCT ADV Cabinet	

Алматы (7273)495-231
Ангарск (3955)60-70-56
Архангельск (8182)63-90-72
Астрахань (8512)99-46-04
Барнаул (3852)73-04-60
Белгород (4722)40-23-64
Благовещенск (4162)22-76-07
Брянск (4832)59-03-52
Владивосток (423)249-28-31
Владикавказ (8672)28-90-48
Владимир (4922)49-43-18
Волгоград (844)278-03-48
Вологда (8172)26-41-59
Воронеж (473)204-51-73
Екатеринбург (343)384-55-89

Иваново (4932)77-34-06
Ижевск (3412)26-03-58
Иркутск (395)279-98-46
Казань (843)206-01-48
Калининград (4012)72-03-81
Калуга (4842)92-23-67
Кемерово (3842)65-04-62
Киров (8332)68-02-04
Коломна (4966)23-41-49
Кострома (4942)77-07-48
Краснодар (861)203-40-90
Красноярск (391)204-63-61
Курск (4712)77-13-04
Курган (3522)50-90-47
Липецк (4742)52-20-81

Магнитогорск (3519)55-03-13
Москва (495)268-04-70
Мурманск (8152)59-64-93
Набережные Челны (8552)20-53-41
Нижний Новгород (831)429-08-12
Новокузнецк (3843)20-46-81
Ноябрьск (3496)41-32-12
Новосибирск (383)227-86-73
Омск (3812)21-46-40
Орел (4862)44-53-42
Оренбург (3532)37-68-04
Пенза (8412)22-31-16
Петрозаводск (8142)55-98-37
Псков (8112)59-10-37

Пермь (342)205-81-47
Ростов-на-Дону (863)308-18-15
Рязань (4912)46-61-64
Самара (846)206-03-16
Саранск (8342)22-96-24
Санкт-Петербург (812)309-46-40
Саратов (845)249-38-78
Севастополь (8692)22-31-93
Симферополь (3652)67-13-56
Смоленск (4812)29-41-54
Сочи (862)225-72-31
Ставрополь (8652)20-65-13
Сургут (3462)77-98-35
Сыктывкар (8212)25-95-17
Тамбов (4752)50-40-97

Тверь (4822)63-31-35
Тольятти (8482)63-91-07
Томск (3822)98-41-53
Тула (4872)33-79-87
Тюмень (3452)66-21-18
Ульяновск (8422)24-23-59
Улан-Удэ (3012)59-97-51
Уфа (347)229-48-12
Хабаровск (4212)92-98-04
Чебоксары (8352)28-53-07
Челябинск (351)202-03-61
Череповец (8202)49-02-64
Чита (3022)38-34-83
Якутск (4112)23-90-97
Ярославль (4852)69-52-93

Россия +7(495)268-04-70

Казахстан +7(7172)727-132

Киргизия +996(312)96-26-47

www.hpafaip.nt-rt.ru | | hip@nt-rt.ru